

ITEM NUMBERS:
33102 / 33103

WARNINGS:

- Do not stand on box
- Do not let children play in box
- Be careful not to pinch fingers when opening and closing door
- An additional Pet-safe anti-chew spray is recommended
- Not intended for outdoor use



Right side x 1



Left side x 1



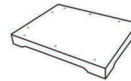
Door panel x 1



Top panel x 1



Back panel x 1



Base panel x 1



Long screw for base x 4



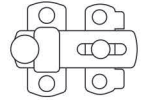
Mini fix connector x 8



Wood pointed screws x 8:
 hinges x 6,
 latch x 2



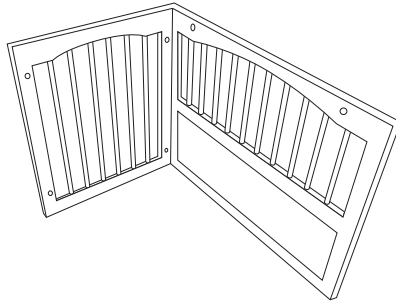
Series cam x 8



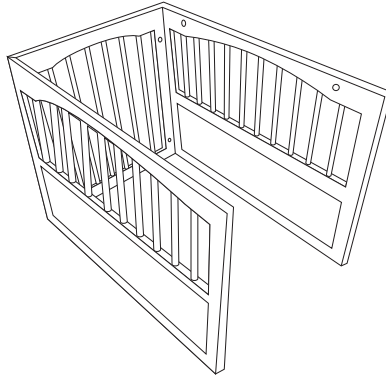
Latch x 1

1 Attach right panel to the back panel. Prepare right panel by inserting series cams (2) into prepared holes. Screw in tightly using Phillips screwdriver.

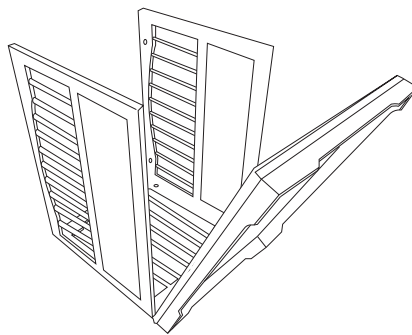
Prepare back panel by inserting mini fix connectors (4) into prepared holes. Ensure connectors are in the open position. Rotate if necessary. To attach, align and insert the series cams on the right panel into the mini fix connector opening on the back panel. Push in the mini fix connector until flush, and lock it into place, by rotating it clockwise with screwdriver.



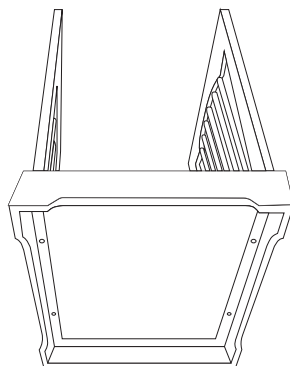
2 Attach left panel to the back panel. Prepare left panel by inserting series cams (2) into prepared holes. Screw in tightly using Phillips screwdriver. Attach the left panel to the back panel by aligning and inserting the series cam on the left panel with the mini fix connector opening on the back panel. Push in the mini fix connector until flush, and lock it into place, by rotating it clockwise with screwdriver.



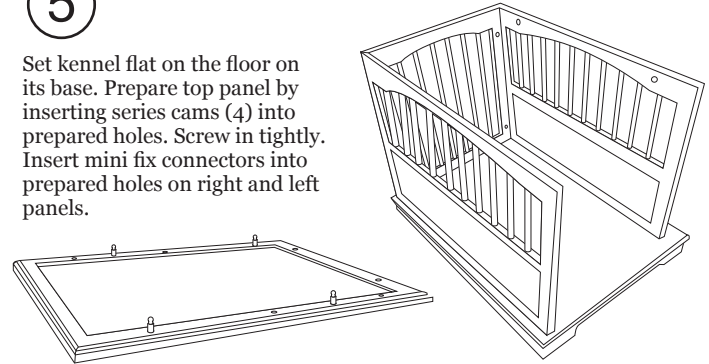
3 Prepare to attach base panel. Set already assembled panels on the floor with the back panel flat on the floor.



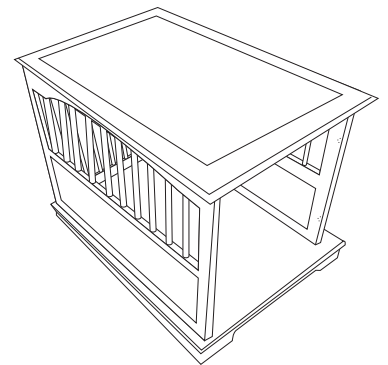
4 Attach base panel. With the bottom of the base panel facing you, insert the large screws (4) into prepared holes in base, align the screws with the prepared holes in the right and left panels, screw in to attach base panel to left and right panels.



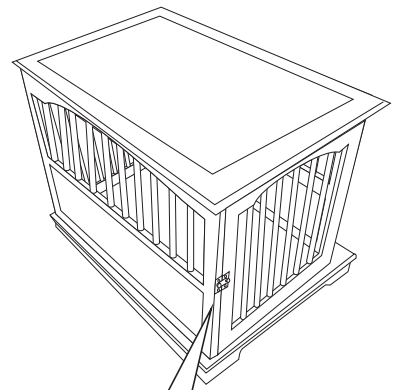
5 Set kennel flat on the floor on its base. Prepare top panel by inserting series cams (4) into prepared holes. Screw in tightly. Insert mini fix connectors into prepared holes on right and left panels.



6 Attach top panel by aligning series cams to mini fix connector. When aligned, lower top onto kennel and press down firmly to ensure top is flush against kennel. Push in the mini fix connector until flush, and lock it into place, by rotating it clockwise with screwdriver.



7 Attach door panel to the right panel by inserting wood pointed screws into the hinges on the door panel and screw into prepared holes on the right panel.



8 Attach latch to the door panel using a screwdriver to screw 2 oil rubbed bronze screws into prepared holes on the front of the door.

